



Asian American Federation  
of New York

# **Asian Pacific American Same-Sex Households: A Census Report On New York City, San Francisco And Los Angeles**

**- MAPBOOK -**



Commissioned by the CJ Huang Foundation

March 22, 2004

## **RESEARCH TEAM**

Andrew Yan, Data Manager, Census Information Center, Asian American Federation of New York

Carol Peng, Assistant Director of Research, Asian American Federation of New York

Anna Lee, Research Assistant, Asian American Federation of New York

Jordan Rickles, Data Consultant

Laura Abbott, Communications Consultant

# Asian Same-Sex Unmarried Partner Households in the New York Primary Metropolitan Statistical Area By Census Tract

Asian Same-Sex Households

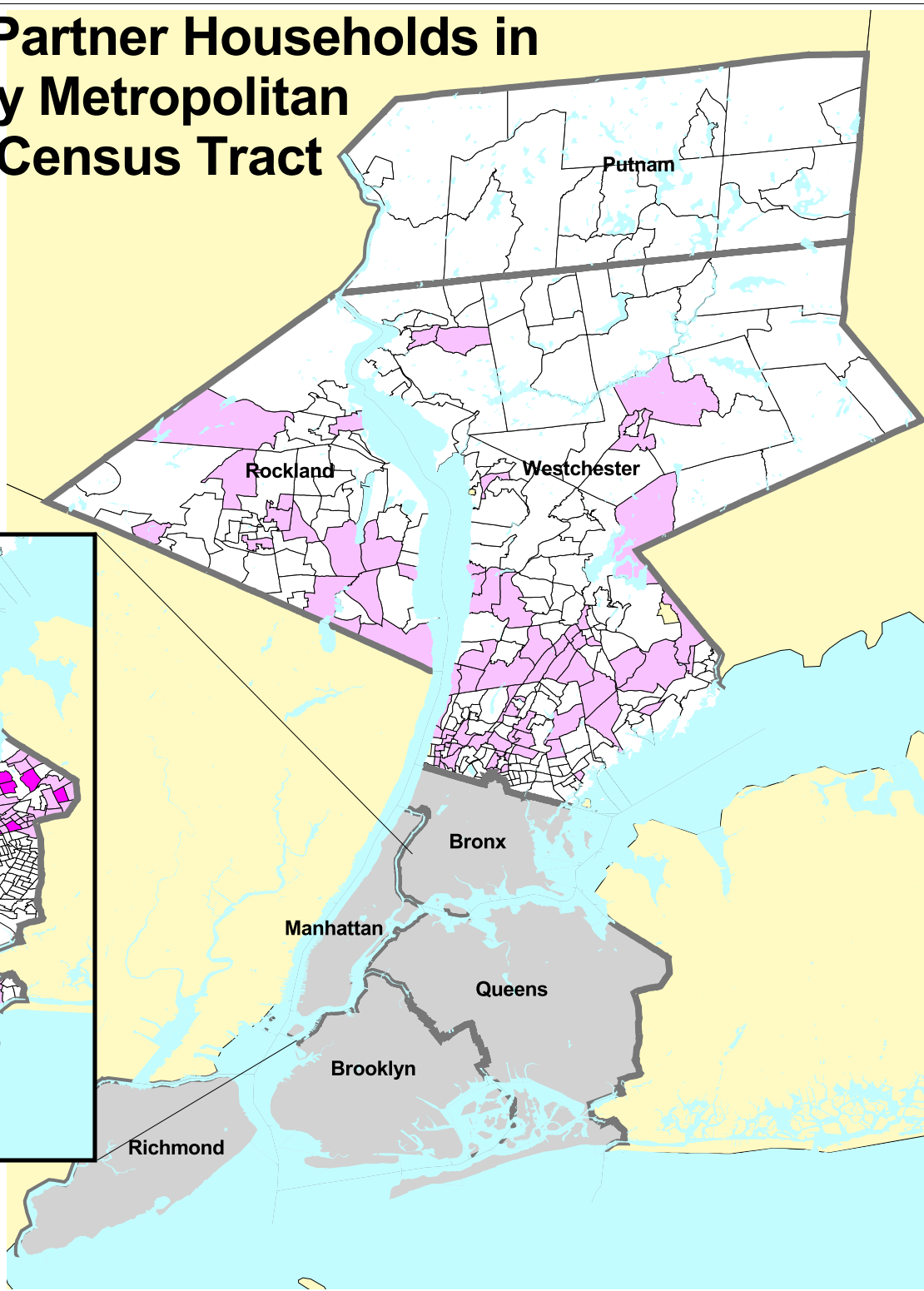
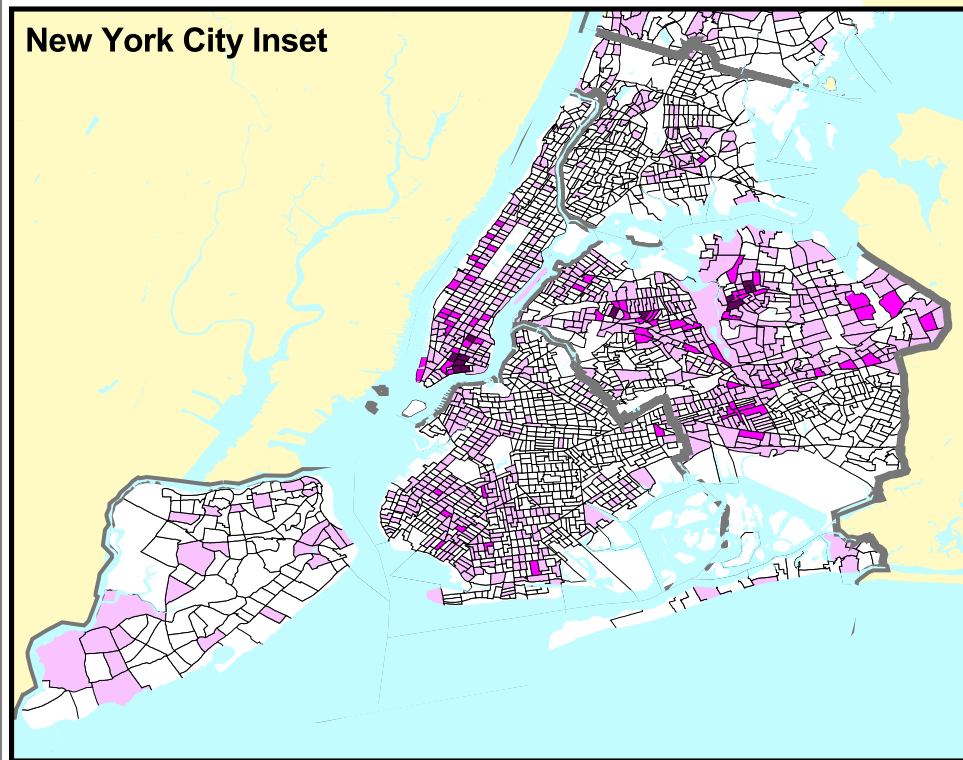
0

1 - 4

5 - 9

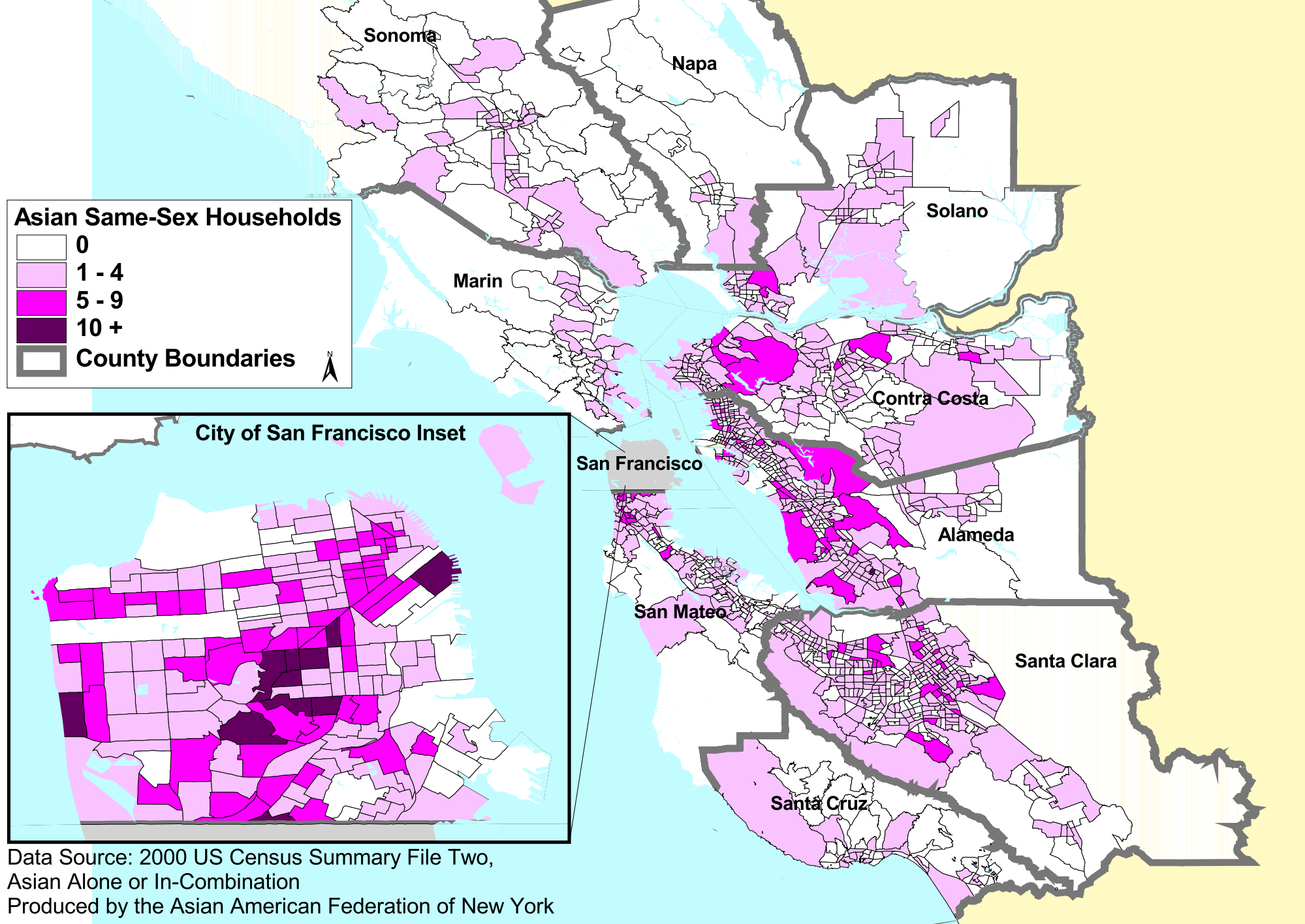
10 +

County Boundaries

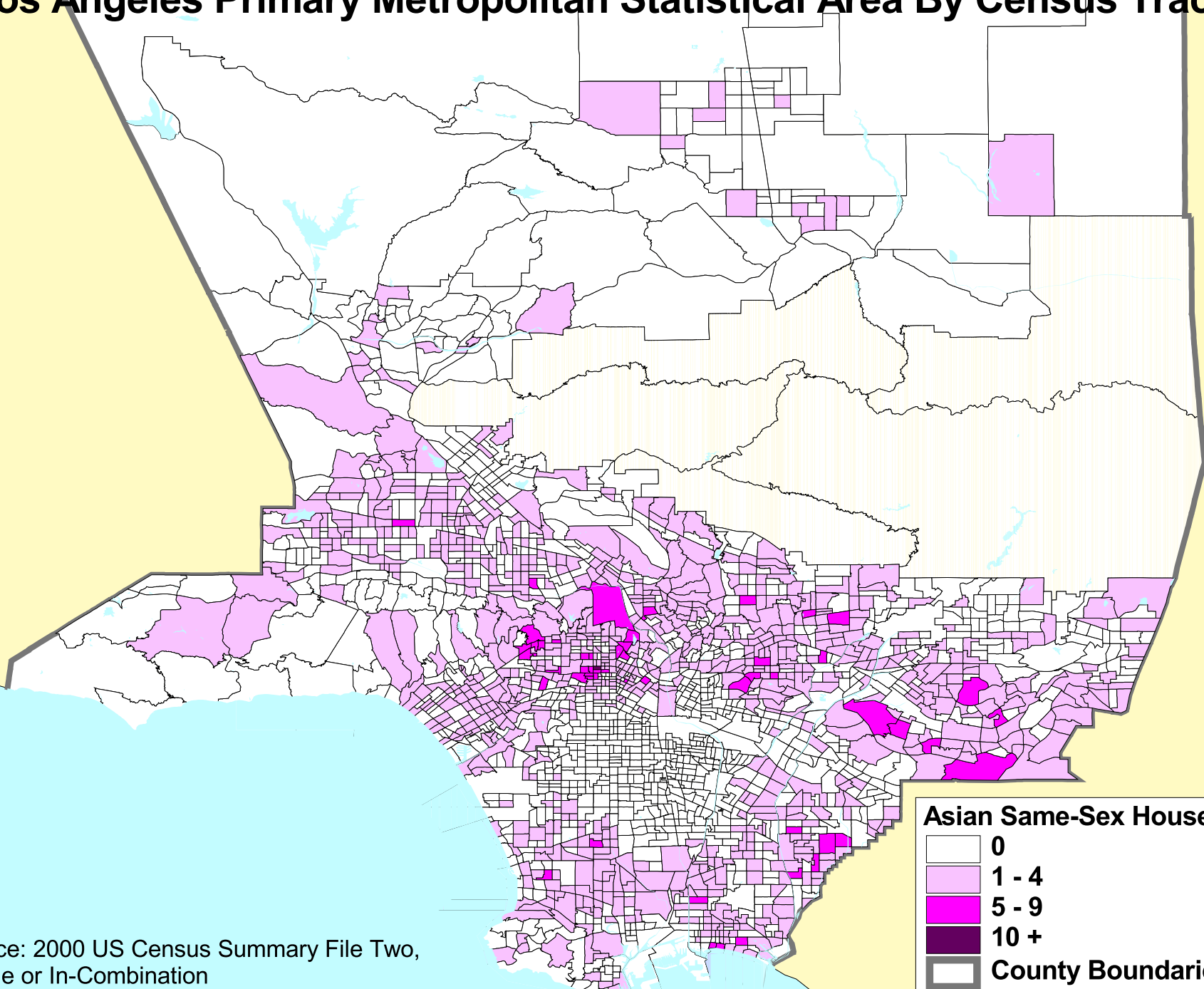


Data Source: 2000 US Census Summary File Two,  
Asian Alone or In-Combination  
Produced by the Asian American Federation of New York

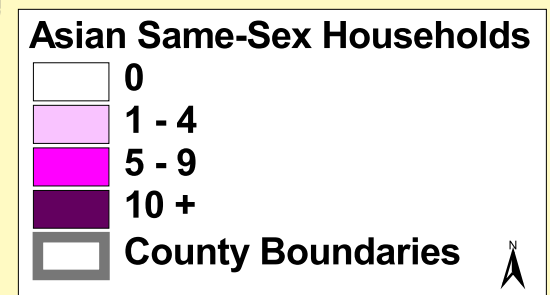
# Asian Same-Sex Unmarried Partner Households in the San Francisco Consolidated Metropolitan Statistical Area By Census Tract



# Asian Same-Sex Unmarried Partner Households in the Los Angeles Primary Metropolitan Statistical Area By Census Tract



Data Source: 2000 US Census Summary File Two,  
Asian Alone or In-Combination  
Produced by the Asian American Federation of New York



# ABOUT THE ASIAN AMERICAN FEDERATION OF NEW YORK AND ITS CENSUS INFORMATION CENTER

The Asian American Federation of New York is a nonprofit leadership organization that works collaboratively to meet the critical needs of Asian Americans in the New York metropolitan area. The Federation strengthens community-based health and social services capacity by supporting its 35 member agencies and other grassroots organizations; amplifies the Asian American civic voice by defining, analyzing, and advocating for policies to address key community issues; and encourages strategic, high-impact philanthropy within the Asian American community by increasing opportunities for connecting time, talent and financial resources with pressing community needs. For more information on the Federation, visit [www.aafny.org](http://www.aafny.org).

The U.S. Census Bureau selected the Federation to operate the only Census Information Center (CIC) in the New York area focused on serving the Asian American community. Established in 2000, the center provides census information, conducts data and policy analysis, and encourages census participation. For more information on the CIC, visit [www.aafny.org/cic/](http://www.aafny.org/cic/).

Map citations from this report should include the following acknowledgment: “Map by the Asian American Federation Census Information Center.”

© 2004 All maps are copyright by the Asian American Federation of New York



**Asian American Federation of New York**  
120 Wall Street, 3rd Floor, New York, NY 10005  
Tel: (212) 344-5878 | Fax: (212) 344-5636  
[www.aafny.org](http://www.aafny.org)