



New York City

2022 Primary Election Voter Guide

AAPI POWER
COALITION

English

About Us



The **AAPI Power Coalition** is a grassroots collective working to empower Asian American and Pacific Islander communities through voter education and outreach. Our coalition includes 10 organizations serving diverse communities across New York City.



The **Asian American Federation**, founded in 1989, is New York City's most powerful leadership voice advocating for greater justice and opportunity for the 1.5 million New Yorkers that make up New York's Asian community.

Contact Us

120 Wall Street, 9th Fl,
New York, NY 10005

vote@aafederation.org

(212) 344-5878

Key Election Dates

Voter Registration Deadline

IN PERSON & BY MAIL

FRIDAY
JULY

29th

Last Day to Request Absentee Ballot

BY MAIL

MONDAY
AUGUST

8th

IN PERSON

MONDAY
AUGUST

22nd

Early Voting Period

AUGUST

13th

AUGUST

21st

Times vary

Primary Election Day

IN PERSON

TUESDAY
AUGUST

23rd

6AM - 9PM

Last Day to Return Absentee Ballot

IN PERSON & BY MAIL

TUESDAY
AUGUST

23rd

Who Can I Vote For?

Federal and State Offices

This August, you can vote for your next congressman to represent you in the U.S. House of Representatives, and for your next state senator to represent you in the New York State Senate. Both of these offices create laws that affect you, your family and your neighborhood, so make sure you vote!

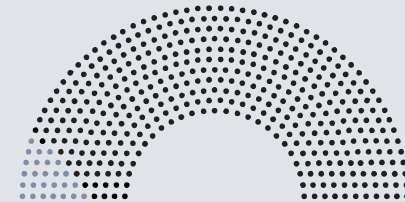


Find out which candidates are running in your district:



U.S. House of Representatives

The lower chamber of the U.S. Congress. They work together with the U.S. Senate (upper chamber) and the President to create and pass new federal laws. There are 435 members. In 2023, New York will have 26 representatives. Elected for 2 year terms.



State Senate

The upper chamber of the New York State Legislature. Similar to our federal government, they work together with the State Assembly (lower chamber) and the Governor to create and pass new state laws. There are 63 members representing different parts of the state. Elected for 2 year terms.



The Primary Election

In the primary election, you decide which candidates will be your party's nominees for the general election in November.

You must register with a political party to vote in New York's primary elections. You can do this when you register to vote or by updating your registration.

You can check your party affiliation here:



Registering to Vote



The deadline to register for the August 23rd election is **July 29th**. So don't wait!

Register online or by filling out a paper form. Completed paper forms can be mailed or delivered to the Board of Elections.



If you need help registering, ask one of our volunteers or email us at **vote@aafederation.org**



Download and print an English registration form: (must be completed in English)



or



Register to vote online: (English only)



How Do I Vote?

Vote Early in Person

Every NYC voter can vote early in person before Election Day. Voting early is convenient, fast, and flexible.

You can vote early from August 13-August 21, though hours vary each day.

Vote on Election Day

Make your voice heard by voting on Primary Election Day, August 23.

Polls are open from 6am-9pm

Visit the NYC Board of Elections website to find your polling location for early voting and election day:



Vote Absentee

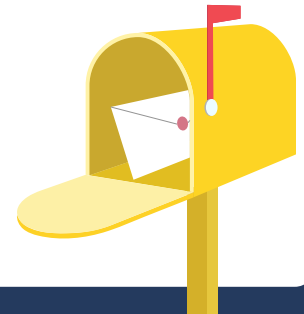
Voting by mail is a safe, easy, and secure way to cast your vote.

A return envelope and instructions will be included. However, you must add postage to mail in your ballot. We recommend two stamps.

Request an absentee ballot to be mailed to you:



*Absentee ballots can also be dropped off at your county Board of Elections or your polling place on election day or on an early voting day



Voter Accessibility

Language Assistance

Language interpreters are available at some polling locations.



If you need language assistance at a poll site, you also have the right to bring your own interpreter with you

Find out which polling locations will provide interpretation services:



Disability Assistance

Ballot Marking Devices are available at polling locations and can be helpful to voters who are blind, visually impaired, or have a disability or condition that makes it difficult or impossible to mark a ballot with a pen.



Learn more about Ballot Marking Devices:



FAQ

Do I need to bring an ID?

It is recommended that first time voters bring an ID.

What if I moved?

When you move, you should change your address with the Board of Elections by submitting a new voter registration form.

Who is eligible to vote?

You are eligible to register to vote if you are:

1. a U.S. citizen
2. a New York City resident for at least 30 days
3. & at least 16 years old
(you can pre-register to vote at 16 or 17, but you must be 18 to vote)

Who should I call if there's an issue at my poll site?

You can call the NYC Board of Elections about any issues at your poll site.
Call 1-866-VOTE-NYC (1-866-868-3692)

Who can I contact if my rights, or someone else's, are being violated?

You can contact the Election Protection hotline to speak with a trained Election Protection volunteer and get free legal support.
Call 1-866-OUR-VOTE (1-866-687-8683).

Board of Elections Locations

Bronx

📍 1780 Grand Concourse, 5 Fl,
Bronx, NY 10457

Brooklyn

📍 345 Adams Street, 4 Fl,
Brooklyn, NY 11201

Queens

📍 118-35 Queens Boulevard,
Forest Hills, NY 11375

Manhattan

📍 200 Varick Street, 10 Fl,
New York, NY 10014

Staten Island

📍 1 Edgewater Plaza, 4 Fl,
Staten Island, NY 10305

Where am I voting?

Election Day 2022 is
TUESDAY 8/23

What time am I voting?

Polls are open from
6AM to 9PM

Have questions?

Visit aafederation.org/2022-primary-voter-guide or scan the QR code below for more information on voter registration, methods of voting, political parties and more, or to find your local county Board of Elections office.

SCAN HERE



Or contact us at vote@aafederation.org

**AAPI POWER
COALITION**

